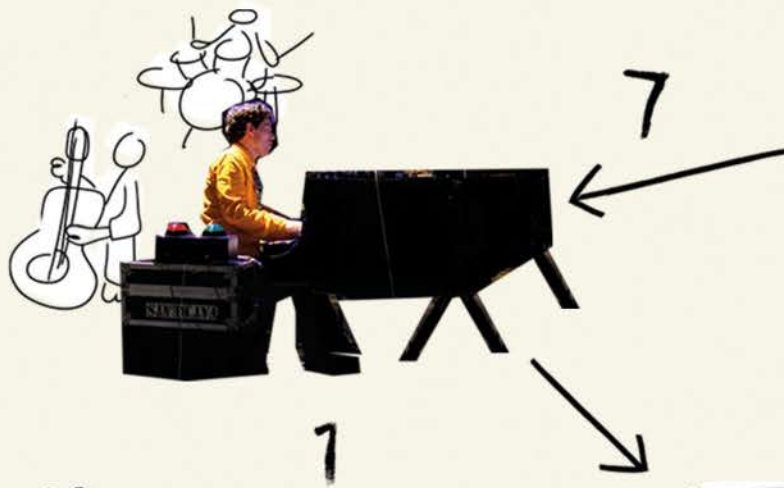


TIN MEN AND THE TELEPHONE



How does tinmendo work?

1) Piano = Keyboard

With laser technology the piano player's key strokes get translated into digital key strokes, thereby transforming the piano's keyboard into a QWERTY-keyboard.

2) Piano player sends information

With the help of his own on stage interface the piano player can send information to the audience's smartphones. He can target both individual guests as well as the whole audience at once.

3) Audience receives content

Based on the piano player's choices the audience will see various screens or interfaces in their Tinmendo app. Messages, polls, instruments, sounds, a blinking camera light or other content is pushed to each guest's smartphone.

4) Audience creates input

Using Tinmendo the audience creates input like Beats, Melodies, Harmonies or can for example cast their vote in different polls.

5) Input is sent to the stage

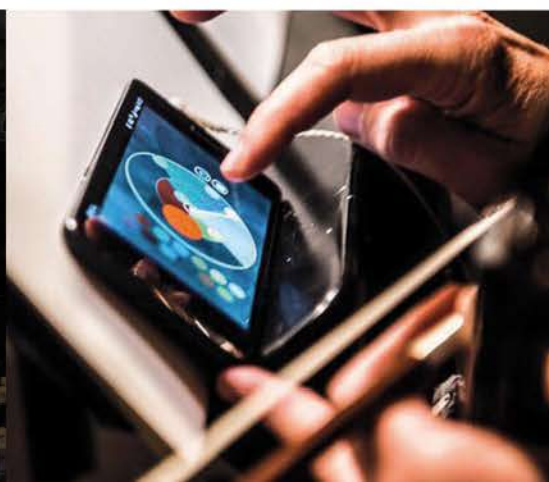
Input created by users gets sent back to the on stage computer by Wifi. Here all content is gathered and combined.

6) Input is displayed

The input created by the audience is displayed on a huge screen above the stage, for the band and the audience to see.

7) Time for Improvisation!

On stage the band improvises with beats, melodies, harmonies or other input created by the audience.





"What to play next?"
The big screen displays the audience's votes!



TIN MEN
AND THE
TELEPHONE

WHERE ARE YOU?

Please let us know where you're sitting.

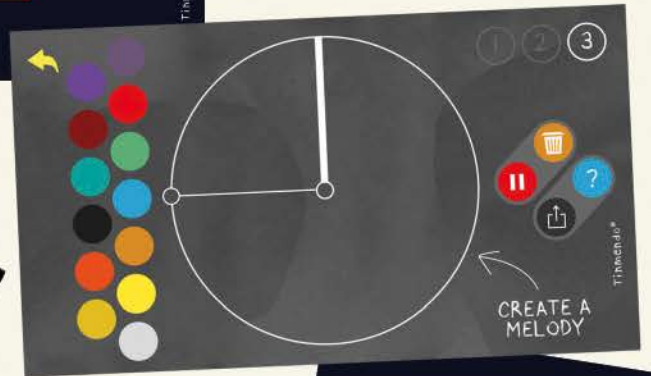
LEFT MIDDLE RIGHT

Vote to co-create our show!

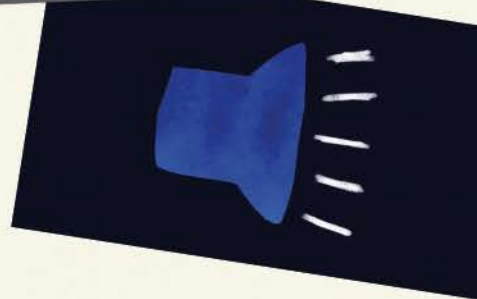


this is saf~

Communicate with us LIVE!



Create musical input!



TIN MEN
AND THE
TELEPHONE

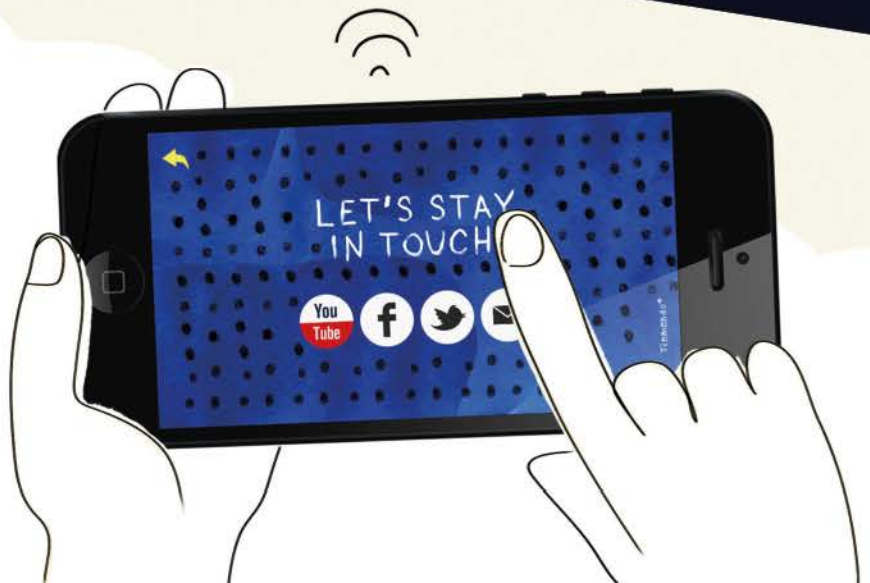
Info & Bookings:

Tin Men & The Telephone
Tony Roe, Amsterdam, NL
+31(0)6 49 360 416
info@tinmenandthetelephone.com

I
GOOD
MUSIC

International Bookings & Management:

Good Music Company
Jurjen Mooiweer, Amsterdam, NL
+31(0)6 422 72 739 | skype: burremooiweer
jurjen@goodmusiccompany.com



tinmenandthetelephone.com